



# Spectrin $\beta$ V Polyclonal Antibody

<b>Catalog No</b>	YP-Ab-03188
<b>Isotype</b>	IgG
<b>Reactivity</b>	Human;Rat;Mouse;
<b>Applications</b>	IHC;IF;ELISA
<b>Gene Name</b>	SPTBN5
<b>Protein Name</b>	Spectrin beta chain non-erythrocytic 5
<b>Immunogen</b>	The antiserum was produced against synthesized peptide derived from human SPTBN5. AA range:481-530
<b>Specificity</b>	Spectrin $\beta$ V Polyclonal Antibody detects endogenous levels of Spectrin $\beta$ V protein.
<b>Formulation</b>	Liquid in PBS containing 50% glycerol, 0.5% BSA and 0.02% sodium azide.
<b>Source</b>	Polyclonal, Rabbit,IgG
<b>Purification</b>	The antibody was affinity-purified from rabbit antiserum by affinity-chromatography using epitope-specific immunogen.
<b>Dilution</b>	IHC: 1/100 - 1/300. ELISA: 1/40000.. IF 1:50-200
<b>Concentration</b>	1 mg/ml
<b>Purity</b>	$\geq 90\%$
<b>Storage Stability</b>	-20°C/1 year
<b>Synonyms</b>	SPTBN5; BSPECV; HUBSPECV; HUSPECV; Spectrin beta chain; non-erythrocytic 5; Beta-V spectrin
<b>Observed Band</b>	
<b>Cell Pathway</b>	Cytoplasm, cytoskeleton. Detected prominently in the outer segments of photoreceptor rods and cones and in the basolateral membrane and cytosol of gastric epithelial cells.
<b>Tissue Specificity</b>	Expressed at very low levels in many tissues, with strongest expression in cerebellum, spinal cord, stomach, pituitary gland, liver, pancreas, salivary gland, kidney, bladder, and heart.
<b>Function</b>	similarity:Belongs to the spectrin family.,similarity:Contains 1 PH domain.,similarity:Contains 2 CH (calponin-homology) domains.,similarity:Contains 31 spectrin repeats.,subcellular location:Detected prominently in the outer segments of photoreceptor rods and cones and in the basolateral membrane and cytosol of gastric epithelial cells.,subunit:Probably associates with an alpha chain.,tissue specificity:Expressed at very low levels in many tissues, with strongest expression in cerebellum, spinal cord, stomach, pituitary gland, liver, pancreas, salivary gland, kidney, bladder, and heart.,
<b>Background</b>	similarity:Belongs to the spectrin family.,similarity:Contains 1 PH domain.,similarity:Contains 2 CH (calponin-homology) domains.,similarity:Contains 31 spectrin repeats.,subcellular location:Detected



prominently in the outer segments of photoreceptor rods and cones and in the basolateral membrane and cytosol of gastric epithelial cells.,subunit:Probably associates with an alpha chain.,tissue specificity:Expressed at very low levels in many tissues, with strongest expression in cerebellum, spinal cord, stomach, pituitary gland, liver, pancreas, salivary gland, kidney, bladder, and heart.,

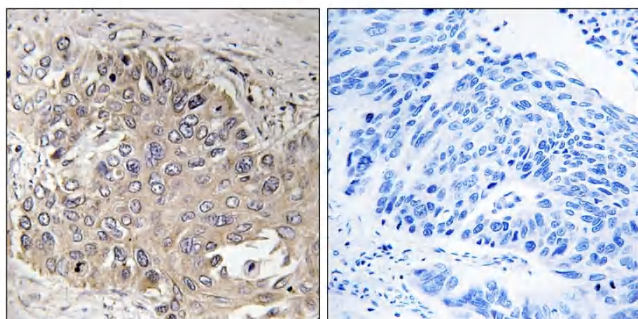
**matters needing attention**

Avoid repeated freezing and thawing!

**Usage suggestions**

This product can be used in immunological reaction related experiments. For more information, please consult technical personnel.

## Products Images



Immunohistochemistry analysis of paraffin-embedded human lung carcinoma, using SPTBN5 Antibody. The picture on the right is blocked with the synthesized peptide.